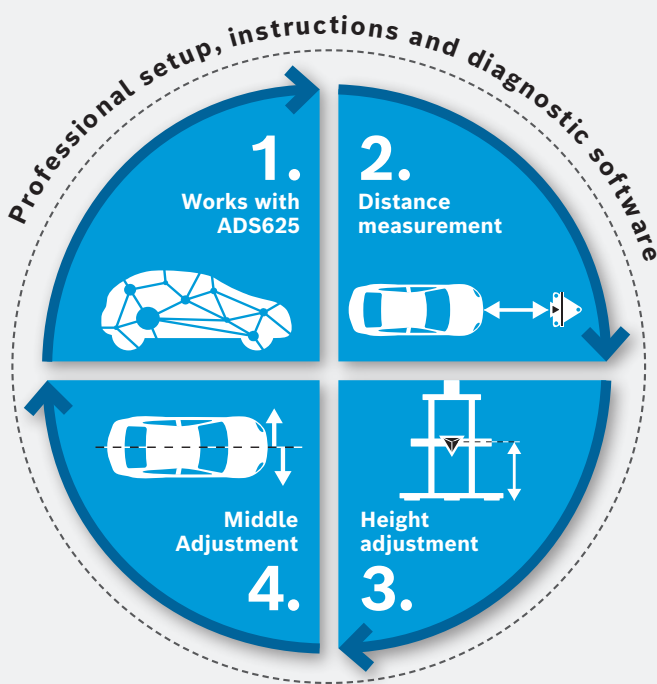


Corner reflector target and carrier for calibration of radar sensors

Rapid setup procedure supported by laser technology

- ▶ Active alignment of radar sensors
- ▶ Rear radar calibration capability
- ▶ For Kia, Hyundai, Mazda, Toyota / Lexus and Honda

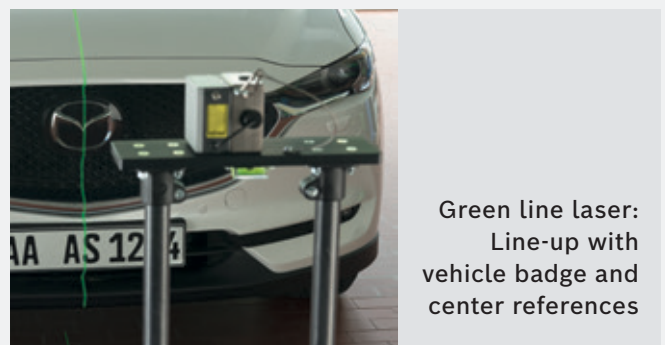
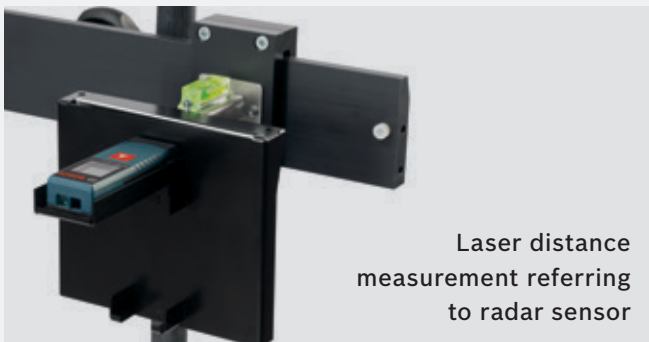


Benefits of SCT 815

- ▶ Corner reflector target for Radar calibration
- ▶ Special design with fiberglass material (no disturbing radar reflections)
- ▶ Fast and accurate setup supported by laser technology
- ▶ Carrier designed to connect future targets and alignment technologies



SCT 815: fast and accurate alignment ensures successful calibration



SCT 815 S1*: Scope of delivery

- ▶ Fixture with corner reflector
- ▶ Setup instructions for make/model/year
- ▶ Laser distance and height measurement device

* Possibility to reuse green line laser of SCT 415 or SCT 1415

📄 **Order number: 0 684 300 106**

SCT 815 S2: Scope of delivery

- ▶ Fixture with corner reflector
- ▶ Setup instructions for make/model/year
- ▶ Laser distance and height measurement device
- ▶ Green line laser to line-up with vehicle center line

📄 **Order number: 0 684 300 107**



Works with ADS625

The vehicle manufacturer decides which learning method for the sensors is used. Bosch supports workshops with the right tools, test equipment and the necessary diagnostic software to perform the adjustment procedures step by step.

Product	Symbol	Laser class	Labeling	Warning
SCT 815 S1/S2		Laser 2		
SCT 815 S2		Laser 1M		Laser Radiation! Do not view directly with optical instruments



BOSCH
Invented for life