

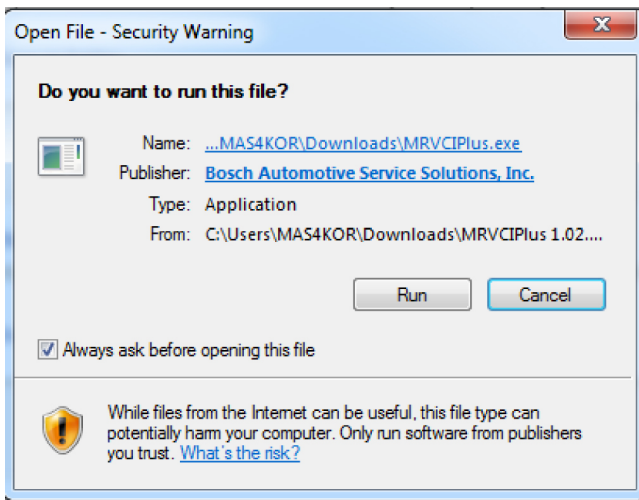
The J2534 driver must be downloaded to your PC to allow communications with the VCI.

NOTE:

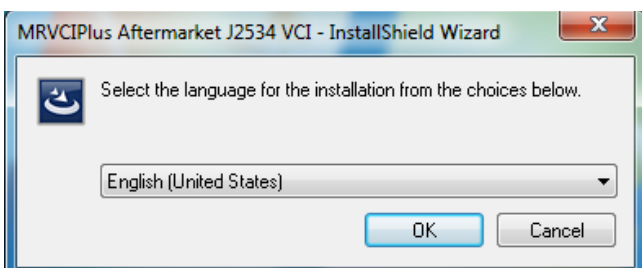
- In order to complete a successful programming event, you must follow the OEM programming requirements on the OEM J2534 website.
- For information on OEM Reprogramming Web Sites and PC requirements, go to the ASA OEM Resource Center at oerepairinfo.com/.

VCI Driver Installation Procedure

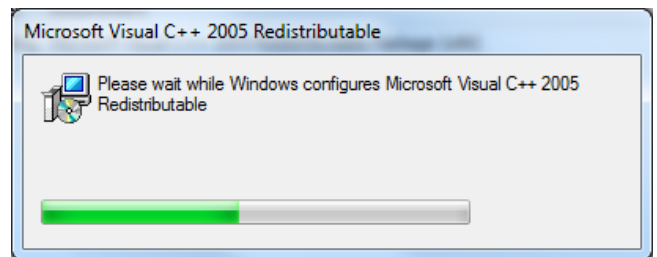
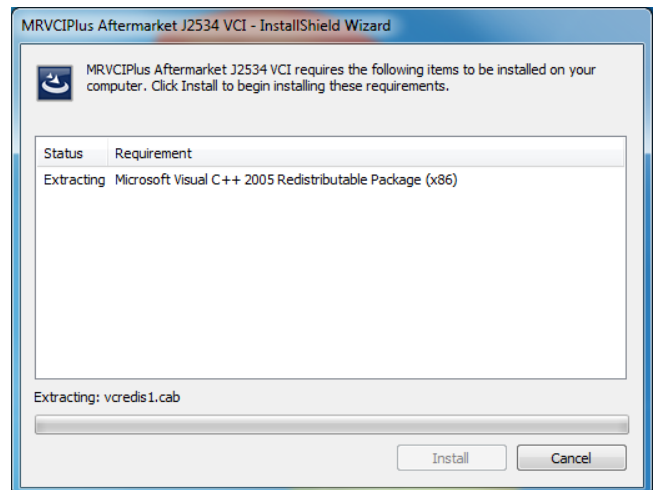
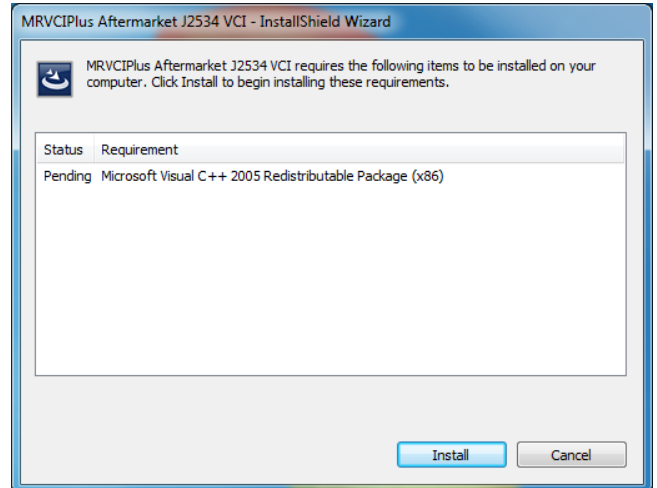
1. To download J2534 drivers:
 - Go to www.boschdiagnostics.com.
 - Click on **Diagnostic Systems**.
 - Navigate to the corresponding product information page.
 - Click on **Downloads**.
 - J2534 drivers will be under **Software Updates and Drivers** section.
2. After the J2534 driver is downloaded to the PC, run the MRVCIPlus.exe file from the download location.



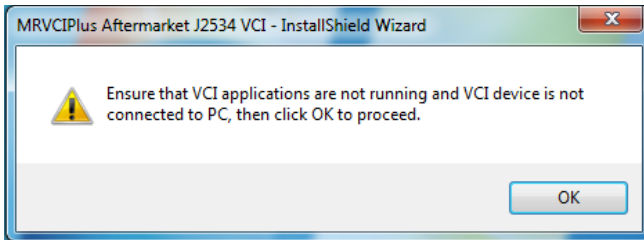
3. Select the language from the list of choices offered in the drop down menu. Select **OK**



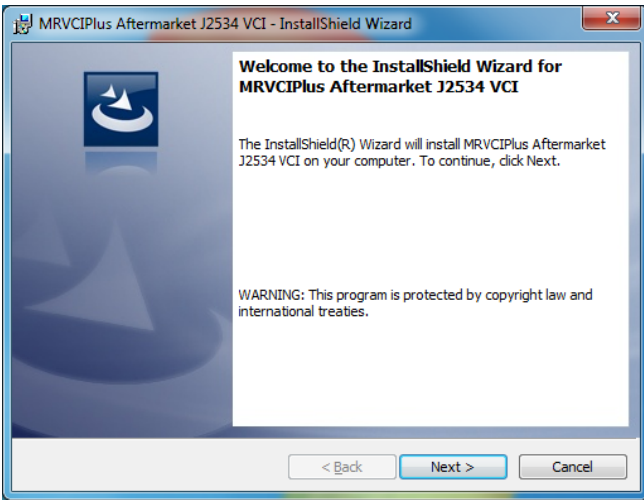
4. If Microsoft Visual C++ 2005 Redistribution package has not been installed on the PC previously, a prompt to install it now opens. Select **Install**.



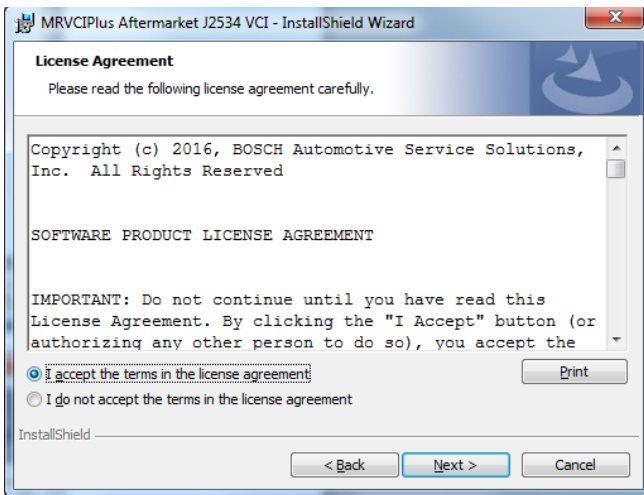
- 5. A prompt to ensure that VCI applications are not running and VCI is not connected to a PC is shown. When confirmed, Select **OK**.



- 6. At the Welcome screen, Select **Next**.

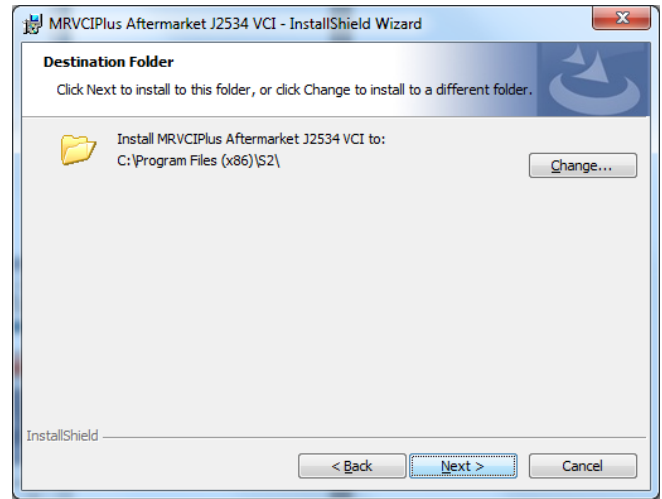


- 7. Read the Software Product License Agreement. Select the **“I accept the terms in the license agreement”** choice and Select **Next**.

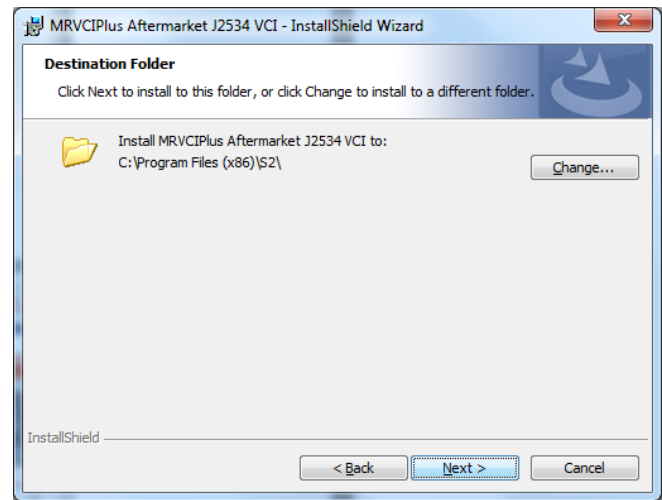


- 8. It is recommended to install the file in the default location. Select **Next**.

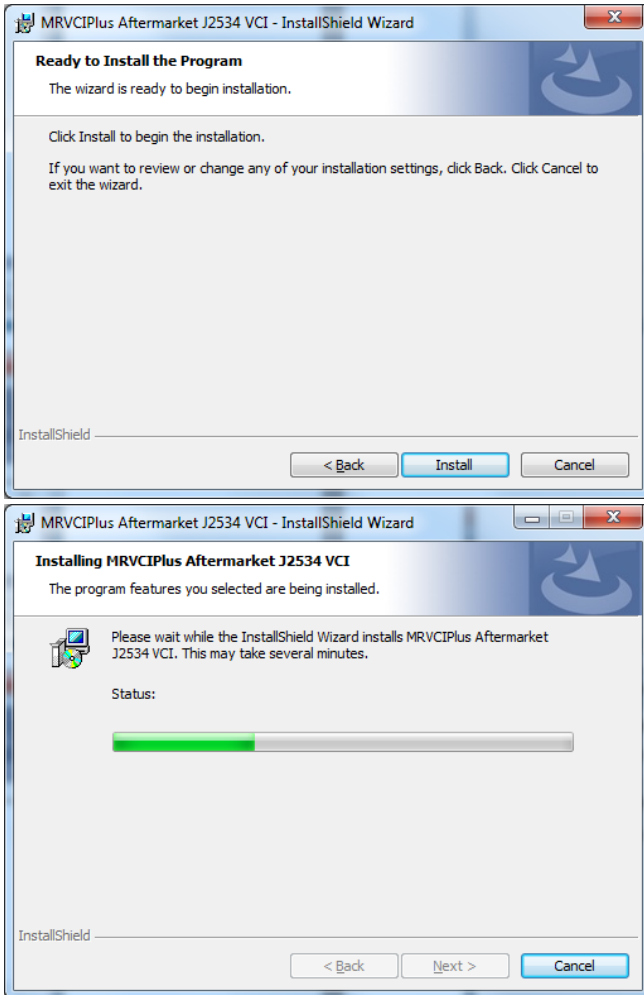
32-bit PCs



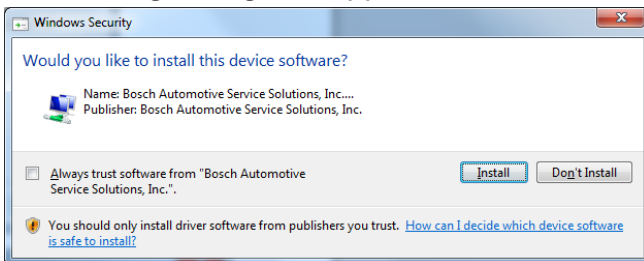
64-bit PCs



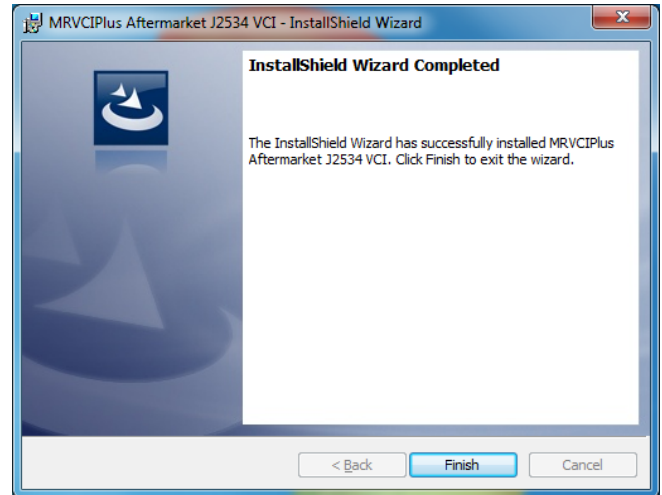
9. Select **Install** to start the installation.



10. If a warning dialog box appears select **Install**.



11. The installation is successfully completed. Select **Finish** to exit.



1699502647 TKU 000 00 INST.,J2534.,DRIVER INSTALL.,BOS

Bosch Technical Support: (855) 267-2483

Please record and retain this important information: