



Mastertech Scan Test Software Release Notes

2012/2 (version 12.2)



BOSCH

Invented for life

This document gives you an overview with detailed information, describing diagnostic functions for MTS 3100 Mastertech, Mastertech VCI (M-VCI), and Shop Foreman Pro.

Table of Contents

1.	MTS 3100 Mastertech Diagnostic Application Enhancements	2
1.1	General Motors Diagnostic Vehicle Coverage	2
1.2	Ford/Lincoln/Mercury Vehicle Coverage	3
2.	M-VCI Diagnostic Application Enhancements	5
2.1	Software Strategy	5
2.2	M-VCI Software Updates	5
3.	Shop Foreman Pro Diagnostic Application Enhancements	7
3.1	Shop Foreman Pro Updates	7
3.2	Version Information	8
3.3	PC Test Configuration Information	8
3.4	Shop Foreman Pro Licensing Information	9



Please Note

Licensing is now being done through the bosch license management system. See the section on licensing for details.

1. MTS 3100 Mastertech Diagnostic Application Enhancements

Specifically, this release updates:

- ▶ General Motors diagnostic application software with additional vehicle coverage and diagnostic functionality
- ▶ Ford diagnostic application software with additional vehicle coverage and diagnostic functionality

Continued below are highlights of the new 2012/2 coverage.



Note

The new scan test v12.2 software load is intended for the 12MB MFT Program Card (p/n 02003335) only. It will not load to the older 4MB, 8MB or 12MB cards.

1.1 General Motors Diagnostic Vehicle Coverage

The scan test 2012/2 (v12.2) software for MTS 3100 Mastertech has increased coverage for model year 2000-2009 General Motors vehicles.

1. Powertrain System Coverage	
2010	Chevrolet Traverse, GMC Acadia, Buick Enclave, Saturn OUTLOOK LLT/D ECM, TCM, FPCM
2010	C/K Light Duty Truck LMG/0 ECM, TCM, FPCM
2010	C/K Light Duty Truck LC9/3 ECM, TCM
2010	C/K Light Duty Truck L20/A ECM, TCM, FPCM
2010	C/K Light Duty Truck LU3/X ECM, TCM
2010	C/K Light Duty Truck L96/G ECM, TCM
2010	C/K Light Duty Truck LY6/K ECM, TCM
2010	C/K Light Duty Truck L9H/2 ECM, TCM, FPCM
2010	C/K Light Duty Truck L94/F ECM, TCM, FPCM
2010	C/K Light Duty Truck LMM/6 ECM, TCM, GPCM
2010	Chevrolet Cobalt, Pontiac G5 LAP/5 ECM, TCM
2010	Chevrolet Cobalt, Pontiac G5 LNF/X ECM, TCM
2010	Chevrolet Malibu, Pontiac G6, Saturn AURA LE5/B ECM, TCM (4-speed and 6-speed transmissions)
2010	Chevrolet Malibu, Pontiac G6, Saturn AURA LE9/0 ECM, TCM (4-speed and 6-speed transmissions)
2010	Chevrolet Malibu, Pontiac G6, Saturn AURA LZ4/N ECM, TCM
2010	Chevrolet Malibu, Pontiac G6, Saturn AURA LZE/K ECM, TCM
2010	Chevrolet Malibu, Pontiac G6, Saturn AURA LY7/7 ECM, TCM
2010	Pontiac G6 LZ9/1 ECM, TCM
2010	Chevrolet Impala LZE/K ECM, TCM
2010	Chevrolet Impala LZ4/N ECM, TCM
2010	Chevrolet Impala LGD/M ECM, TCM

1. Powertrain System Coverage

2009	C/K Light Duty Truck LMM/6 ECM, TCM, GPCM
2009	C/K Light Duty Truck LY6/K ECM, TCM
2009	C/K Light Duty Truck L76/Y ECM, TCM, FPCM
2009	C/K Light Duty Truck LC9/3 ECM, TCM
2009	G/H Light Duty Truck LMM/6 ECM, TCM, GPCM
2007	Saturn ION LSJ/P ECM
2007	Saturn ION L61/F ECM, TCM
2007	Saturn ION LE5/B ECM

2. Body System Coverage

2010	Chevrolet Traverse, GMC Acadia, Buick Enclave, Saturn OUTLOOK BCM, HVAC, IPC, SIR
2010	C/K Light Duty Truck BCM, HVAC, IPC, SIR
2010	Chevrolet Cobalt, Pontiac G5 BCM, IPC, SIR
2010	Chevrolet Malibu, Pontiac G6, Saturn AURA BCM, HVAC, IPC, SIR
2010	Chevrolet Impala BCM, HVAC, IPC, SIR

3. Chassis System Coverage

2010	Chevrolet Traverse, GMC Acadia, Buick Enclave, Saturn OUTLOOK ABS
2010	C/K Light Duty Truck ABS
2010	Chevrolet Cobalt, Pontiac G5
2010	Chevrolet Malibu, Pontiac G6, Saturn AURA ABS
2010	Chevrolet Impala ABS

1.2 Ford/Lincoln/Mercury Vehicle Coverage

The new Scantest 2012 Release 2 (v12.2) Bosch Aftermarket software for MTS 3100 Mastertech has increased coverage to include model year 2011 Ford/Lincoln/Mercury vehicles. See coverage application guide for specific system coverage on each vehicle.

1. 2011 Ford/Lincoln/Mercury Vehicles

2011	Crown Victoria
2011	E-150/250/350/450
2011	Edge
2011	Escape
2011	Expedition
2011	Expedition EL
2011	Explorer
2011	F-150

2011	F-250/350/450/550
2011	Fiesta
2011	Flex
2011	Focus
2011	Fusion
2011	Grand Marquis
2011	Mariner
2011	MH Chassis
2011	Milan
2011	MKS
2011	MKT
2011	MKX
2011	MKZ
2011	Mustang
2011	Navigator
2011	Ranger
2011	Taurus
2011	Town Car
2011	Transit Connect
2011	Tribute

2. 2011 6.7L Diesel PCM Special Functions

Diesel Particulate Filter (DPF) Static Regeneration

Diesel Particulate Filter (DPF) Parameter Reset

Selective Catalytic Reduction (SCR) Emptying

Selective Catalytic Reduction (SCR) Refill

Selective Catalytic Reduction (SCR) Parameter Reset

3. 2000-2011 Airbag System Fault PIDs have been updated to provide full compliance with Ford TSB 07-12-3. Many RCM systems report DTCs which require associated "Fault PID" information to identify the specific fault.

4. ABS Service Bleed procedure added to carry over 2011 vehicles. See coverage application guide for specific vehicle coverage.

2. M-VCI Diagnostic Application Enhancements

2.1 Software Strategy

Software which enables M-VCI functions can be thought of as separate applications, each of which performs a specific set of tasks. The main specialized areas are Shop Foreman Pro, VCI Manager, and Virtual Mastertech.

Shop Foreman Pro is the means by which users interact with the M-VCI. The device is controlled by and sends data to Shop Foreman Pro.

M-VCI Manager provides a means for software updates, checking device status, and personal computer to device connection setup features.

Finally, the **Virtual Mastertech** is the software component which provides a foundation where premium MTS 3100 software, which has been used by many diagnostic technicians for years now, is used on today's vehicles on an all-new industry leading hardware device.

Providing this background information to the reader is important so that all users commonly understand that Virtual Mastertech coverage, and its functionality, will rise and expand to a level equal to MTS 3100 Mastertech capabilities. In future M-VCI software releases, this trend will continue where both MTS 3100 Mastertech and M-VCI software versions are functionally equal, providing more than one platform with the same diagnostic capability!

So you now know our thinking. Our goals are to surpass any previous Bosch product offering with features that make you, the technician who intends to excel at a skilled art, the best that you can be.

2.2 M-VCI Software Updates

M-VCI Software Installation

During software installation, the Installer tool will now install M-VCI Software during Shop Foreman Pro installation. A separate installation allows for separate M-VCI (or other) software updates in the future.

Figure 1 below shows how the applications are displayed in Windows Add/Remove programs. The Bosch M-VCI Software installation (highlighted) along with the Bosch Shop Foreman Pro installation.

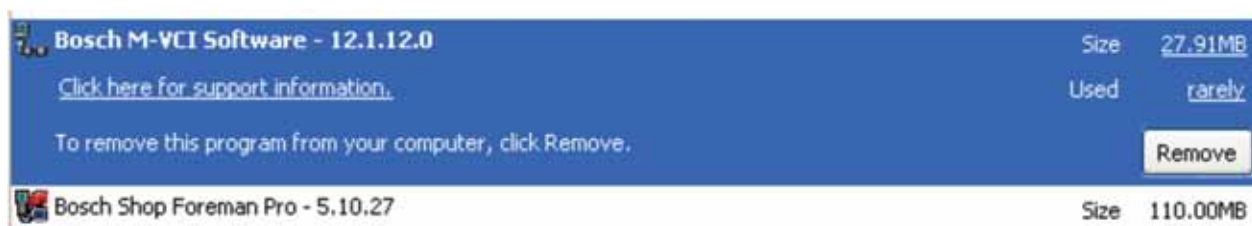


Figure 1 - Bosch Diagnostics Software in Windows Add/Remove Programs

M-VCI Selector Function

- ▶ The M-VCI Selector function allows you to select the M-VCI you wish to work with and to define the desired method of communication (i.e. USB / Wireless / Ethernet) as shown in figure 2.
- ▶ The M-VCI Selector function discovers M-VCI's available on your network (wired and wireless) to determine the IP address of each device.
- ▶ The M-VCI Selector function is used by the Shop Foreman Pro software application to manage device connection (for example, this eases application connection management in a shop that has multiple M-VCI's and software Users). Other Bosch software applications, such as **ESI[tronic]**™ 2.0, will also utilize the M-VCI Selector function.

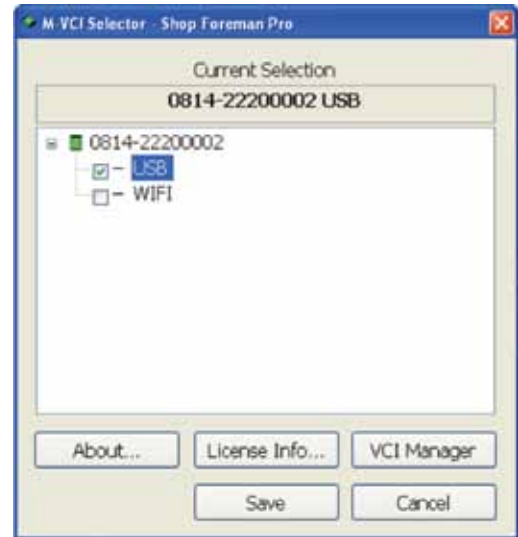


Figure 2 – M-VCI Selector Function

Compatibility with USB WiFi Adapter

- ▶ Allows you to use your M-VCI wirelessly with your PC independent of your existing shop network.
- ▶ The USB WiFi adapter connects to the PC USB port and provides an additional WiFi network for support of an adhoc communication link to the M-VCI.
- ▶ An adhoc wireless setup utility is provided for WIN 7 and WIN VISTA customers to simplify the process of wireless profile creation on the PC and auto connection with the WiFi adapter.
- ▶ WIN XP users will have to manually configure their wireless profile on the PC.



USB WiFi Adapter

3. Shop Foreman Pro Diagnostic Application Enhancements

3.1 Shop Foreman Pro Updates

Diagnostic Coverage

This release updates MTS 3100 and M-VCI diagnostic software for ECU diagnosis. Please see section 1 of this document.

J2534 Reprogramming functionality is compliant with the following OEMs shown below:

Compatible Shop Foreman Pro and M-VCI Software Version	Compatible with J2534 Reprogramming System from the following OEMs:	Reprogramming Application Name and Web Link:
SFP: v5.11.9 M-VCI: v12.2.7	General Motors	Service Programming System http://www.gmtechinfo.com
SFP: v5.11.9 M-VCI: v12.2.7	Ford Motor Company	Ford Module Programming http://www.motorcraftservice.com
SFP: v5.11.9 M-VCI: v12.2.7	American Honda	Honda Pass-Thru https://techinfo.honda.com
SFP: v5.11.9 M-VCI: v12.2.7	Chrysler Group	Chrysler Flash http://www.techauthority.com
SFP: v5.11.9 M-VCI: v12.2.7	Nissan North America	Nissan ECU Reprogramming Software http://www.nissan-techinfo.com



Note

Access to calibration files may require OEM Website Subscription.

For release notes on earlier SFP v5.x releases, please review the prior versions of this document.

Operability Enhancements

- ▶ Application Software Version Mismatch (SFP to VMT)
 - A pop-up message identifies when there is a software version mismatch.
 - M-VCI application firmware on the M-VCI is updated using the VCI Manager software.
 - M-VCI application software (i.e., Virtual MasterTech, or “VMT”) running on the M-VCI no longer has to be in synch with the version of the software installed on the PC.
 - You may choose to continue to use the VMT application without being forced to accept the update.

3.2 Version Information

Version Information for SFP v5.9.4:

Application	Version
Shop Foreman Pro	5.11.9
VCI Manager	1.10.99
vmt VCI S/W Version	12.2.8.0
J2534 VCI S/W Version	1.0.6.7
VCI S/W Version (Platform Version)	12.2.7.0

3.3 PC Test Configuration Information

PC Configuration Used in Testing:

O.S.	Microprocessor	Tested
Win XP (SP3)	32-bit	Yes
Win XP	64-bit	No
Win Vista	32-bit	Yes
Win 7	32-bit	Yes
Win 7	64-bit	Yes



Note

Installation testing included updating from the former released version to what is currently being released based on the above operating systems with a “Yes” In the tested column.

3.4 Shop Foreman Pro Licensing Information

- ▶ Licenses for Shop Foreman Pro will be delivered through the Bosch Licensing Management web portal (VLMS). All customers registered in the Bosch VLMS site will receive an automatic e-mail notification informing them of available software updates when posted to the web site.
- ▶ New customers will receive the Activation License with their tool. The license will be delivered on a printed Shop Foreman Pro license certificate included in the M-VCI storage case.
- ▶ Existing customers that are current with their subscription status and have input their M-VCI Serial Number into the VLMS system will be e-mailed their new Activation License.
- ▶ Return Customers, once Bosch has processed their new subscription, will be sent an e-mail with an Authorization code for processing a new license.
- ▶ Expired customers will be sent an e-mail encouraging them to renew their subscription status and notifying them of the new coverage available in the currently posted release.



Note

Customers experiencing the following error (as shown in the screen shot below), while licensing the M-VCI for Shop Foreman Pro, should **turn off windows firewall**, for both public and private.



Notes

Robert Bosch LLC

2800 South 25th Avenue

Broadview, IL 60155

800-551-2228

www.boschdiagnostics.com