



J2534 VCI Driver Installation Guide

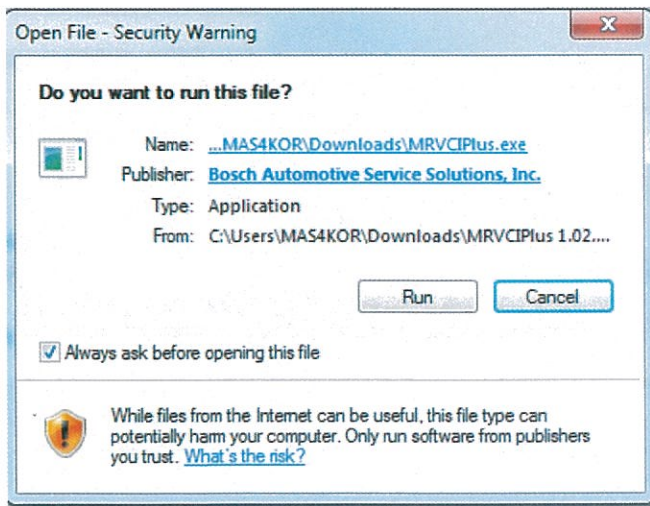
The J2534 driver must be downloaded to your PC to allow communications with the VCI.

NOTE:

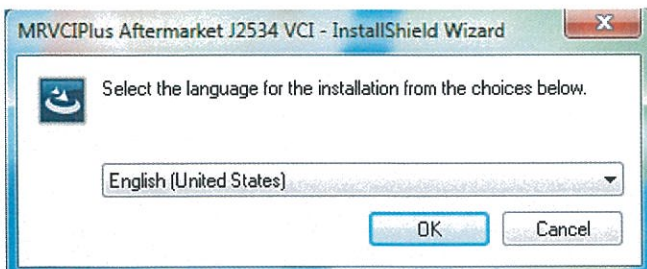
- In order to complete a successful programming event, you must follow the OEM programming requirements on the OEM J2534 website.
- For information on OEM Reprogramming Web Sites and PC requirements, go to the ASA OEM Resource Center at oerepairinfo.com/.

VCI Driver Installation Procedure

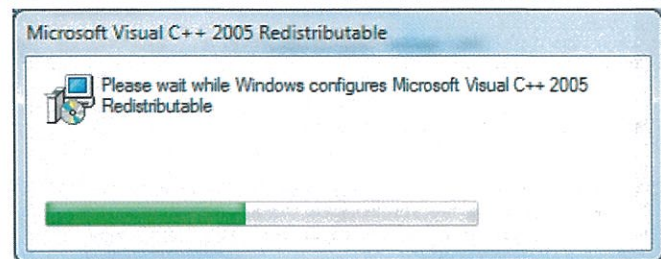
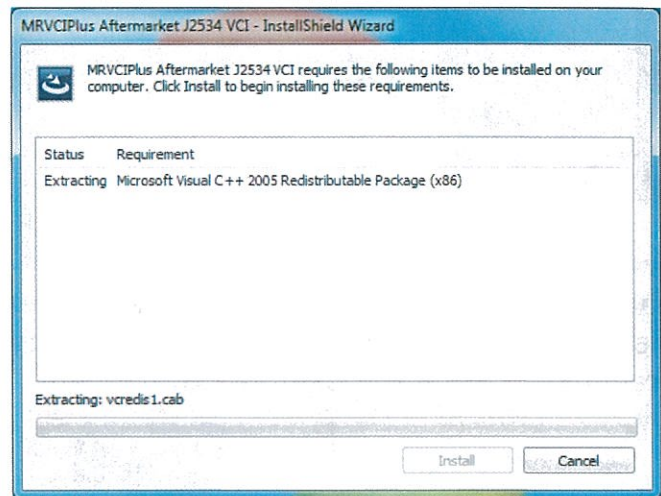
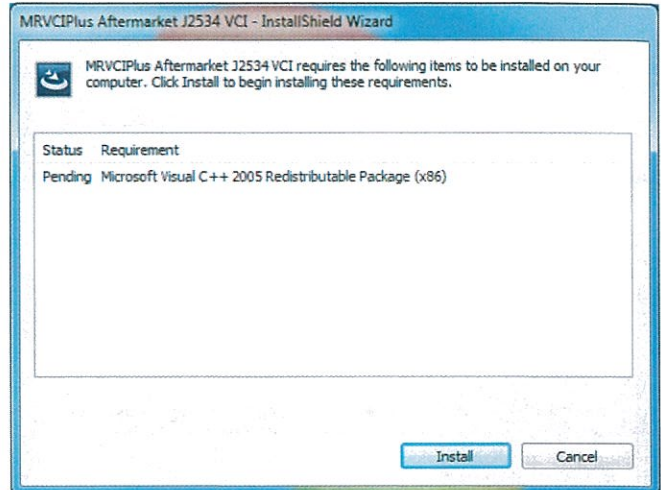
1. The J2534 driver file can be downloaded from the Bosch ADS 625 web page on the Bosch Diagnostics web site: www.boschdiagnostics.com/pro/products/ADS625. Included are the J2534 driver and related information.
2. After the J2534 driver is downloaded to the PC, run the MRVCIPlus.exe file from the download location.



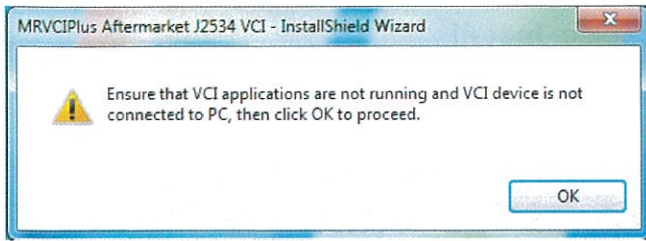
3. Select the language from the list of choices offered in the drop down menu. Select **OK**



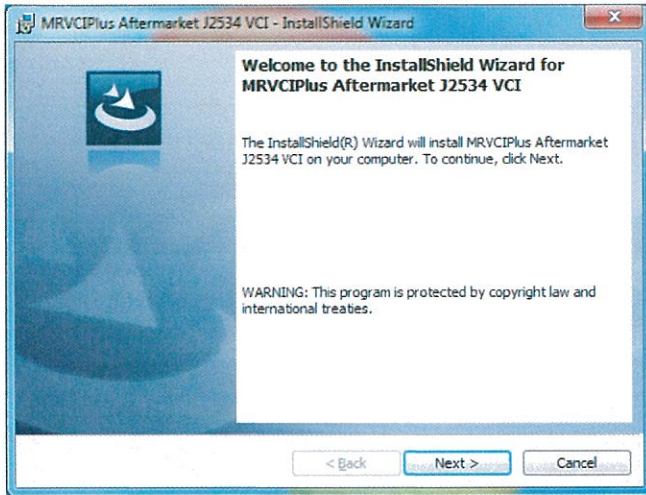
4. If Microsoft Visual C++ 2005 Redistribution package has not been installed on the PC previously a prompt to install it now opens. Select **Install**



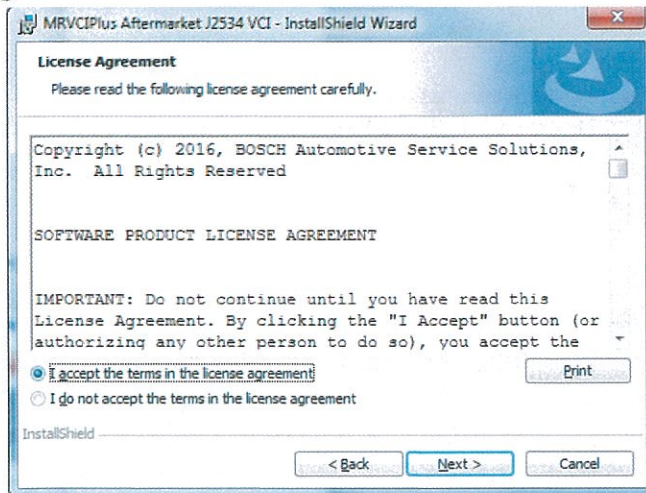
5. A prompt to ensure that VCI applications are not running and VCI is not connected to a PC is shown. When confirmed, Select **OK**.



6. At the Welcome screen, Select **Next**.

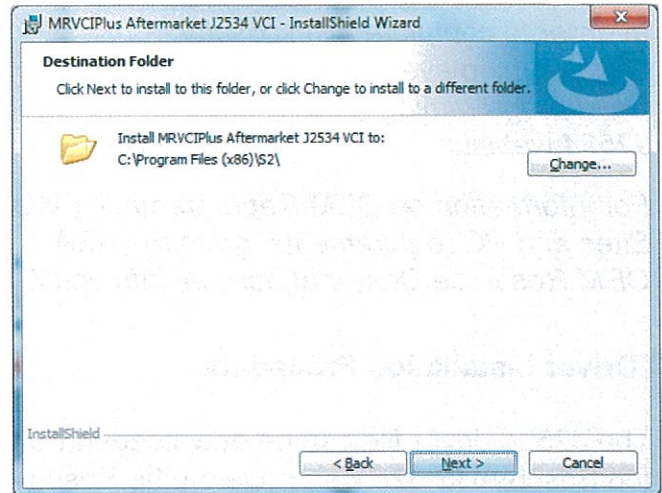


- Read the Software Product License Agreement. Select the **"I accept the terms in the license agreement"** choice and Select **Next**.

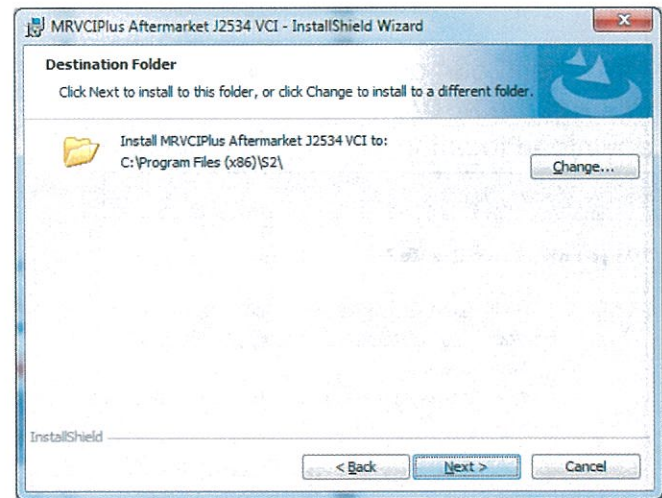


7. It is recommended to install the file in the default location. Select **Next**.

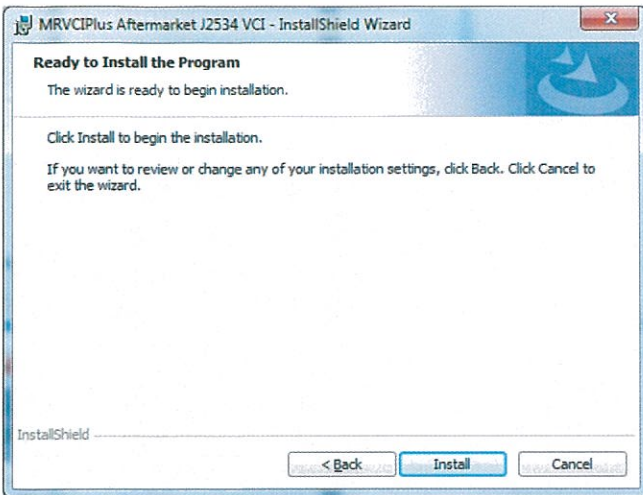
32-bit PCs



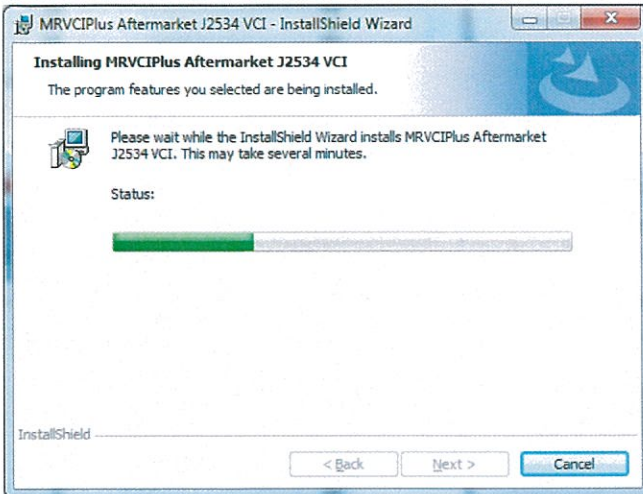
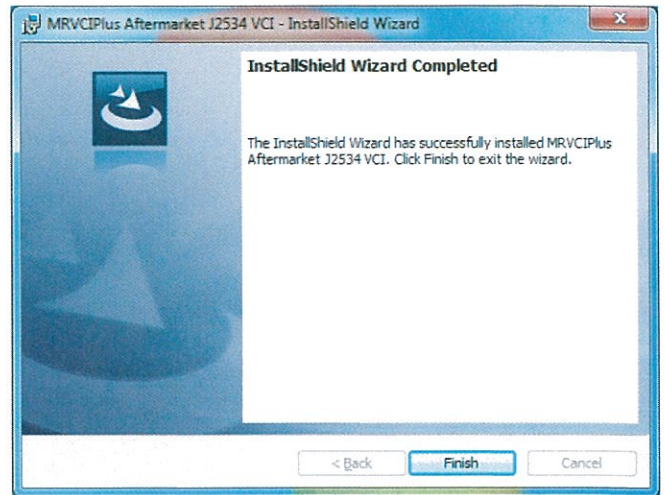
64-bit PCs



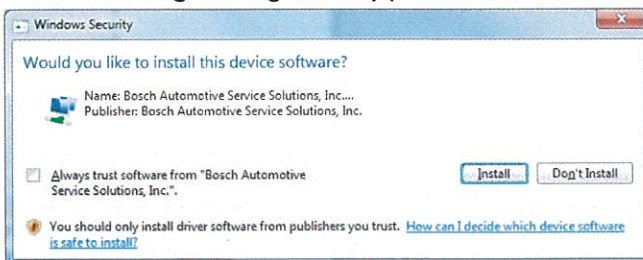
8. Select **Install** to start the installation.



Select **Finish** to exit.



9. If a warning dialog box appears select **Install**.



10. The installation is successfully completed.

Bosch Technical Support: (855) 267-2483
Please record and retain this important information:

