

Flasher LT Quick Start Instructions For Windows XP



BOSCH

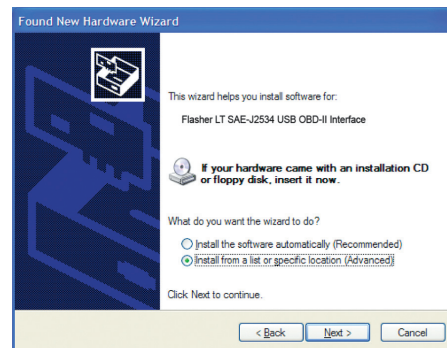
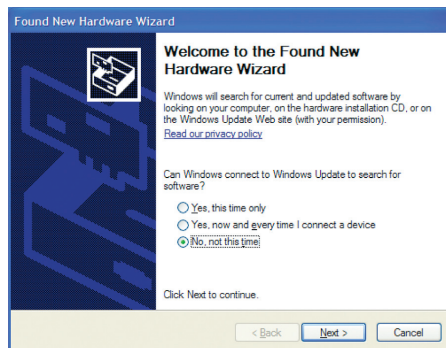
Step 1:

Connect the Flasher LT cable to a USB port on your PC. Windows will detect the Flasher LT automatically by plug-and-play



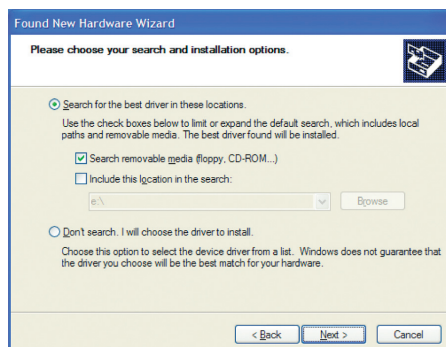
Step 2:

The *Found New Hardware Wizard* will pop-up automatically. Select “No, not this time” and click next. Then click “Install from a list of specific location” and click next.



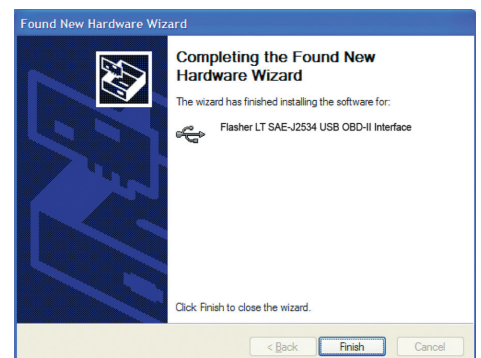
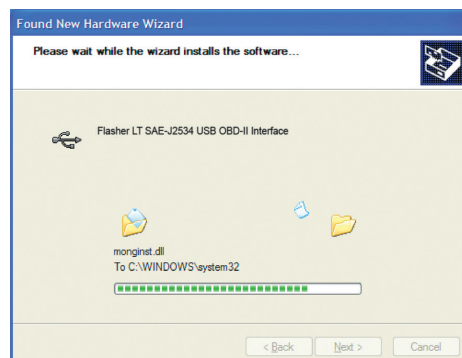
Step 3:

Insert the Flasher LT drivers CD, make sure “Search removable media” is selected, and click next.



Step 4:

The *Found New Hardware Wizard* will install all necessary drivers. A dialog box may pop-up to indicate that Flasher LT has not passed Windows Logo testing. Click “Continue Anyway”.



Instructions for Windows 2000 on other side

Flasher LT Quick Start Instructions For Windows 2000



BOSCH

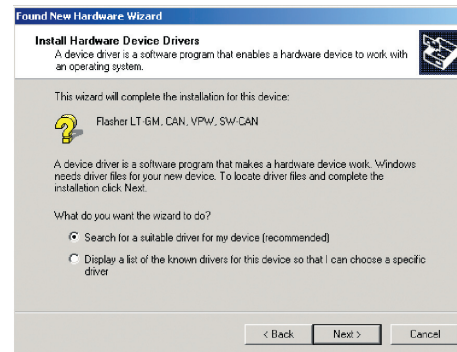
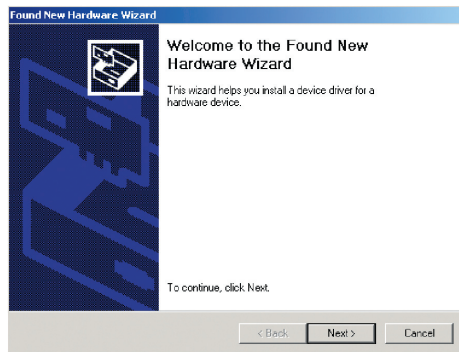
Step 1:

Connect the Flasher LT cable to a USB port on your PC. Windows will detect the Flasher LT automatically by plug-and-play.



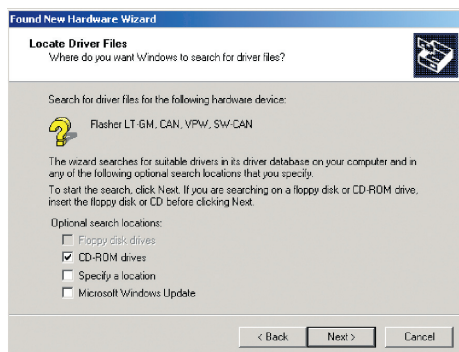
Step 2:

The *Found New Hardware Wizard* will pop-up automatically. Select Next. Then Click “Search for a Suitable Driver for my Device” and click next.



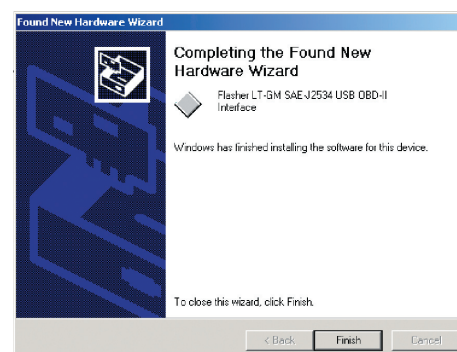
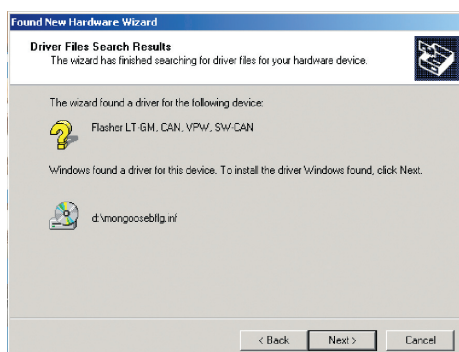
Step 3:

Insert the Flasher LT drivers CD, make sure the CD-ROM drives is selected, and click next.



Step 4:

The *Found New Hardware Wizard* will find the driver on the CD-ROM. Click Next and it will install all of the necessary drivers.



Instructions for Windows XP on other side