



KTS 200 *Quick Start Guide*

ESI[tronic] Software Installation Instructions



BOSCH

Congratulations for making a decision to invest in Bosch,
the world wide leader in automotive technology!

Some Things You Should Know



Caution!

When performing any checks with the engine running in an enclosed space such as a garage, be sure there is proper ventilation. Never inhale exhaust gases; they contain carbon monoxide, a colorless, odorless, extremely dangerous gas which can cause unconsciousness or death.



Caution!

Always set the parking brake securely and block the drive wheels before performing any checks or repairs on the vehicle.



Attention!

Please take the time to read this guide completely. It will walk you through the initial setup and usage of this tool.

The Quick Start Guide is designed to make sure that no critical steps are overlooked while you are performing the preliminary configuration of your new product.

If you find that the kit is damaged or is missing any components, please call Customer Support.

Toll Free: 800-321-4889 ext 4

If you are experiencing any difficulty during the initial setup phase, please call Technical Support.

Toll Free: 800-321-4889 ext 2

Contents

ii	Some Things You Should Know	
1	Table of Contents	
2	KTS 200 ESI[tronic] Software Installation Instructions	
2	Verify Kit Components	
3	Step 1: Installing the ESI[tronic] Startcenter	
3	Step 2: Connecting the KTS 200	
4	Step 3: KTS 200 – Software Update	
5	Step 4: License the KTS 200 – Online Method	



Note

Please make sure that your PC meets the specifications required for the ESI[tronic] software.

KTS 200 ESI[tronic] Software Installation Instructions



Important!

Do not connect the KTS 200 to the PC/laptop until prompted to do so during the installation process.

Before you get started:

- ← Save the Packing Slip that came with your KTS 200 as it has account information you will need during the release process.
- ← Verify your computer’s date and time is accurate (incorrect dates can adversely affect the software security release process)
- ← Close all Windows programs, turn off screen-savers, and disable any anti-virus software.

Verify Kit Components

The KTS 200 contains the following items. Please verify each component received in the Kit.

If you find any missing component, please call Bosch Customer Support. Toll Free: 800-321-4889 ext 4



• KTS 200 Unit



• 16-Pin Data Link Cable (DLC)



• ESI[tronic] KTS 200 “Startcenter” DVD



• USB Connector Cable



• Power Supply



• 12V Cigarette Adapter Power Supply



Note

Have your customer account information at hand (located on the packing slip from the box your KTS 200 arrived in). For assistance contact Customer Support at 800-321-4889 x4.

Step 1: Installing the ESI[tronic] Startcenter

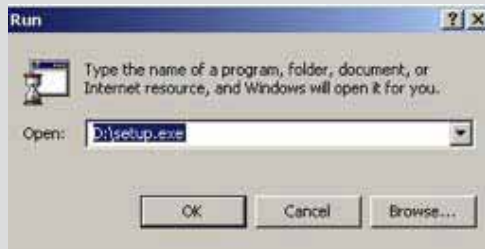


Important!

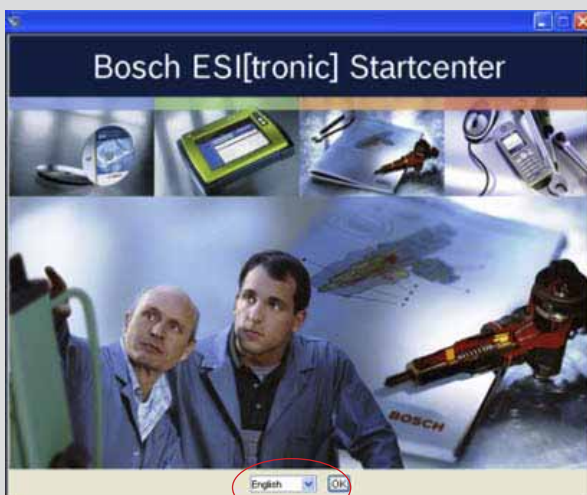
Do not connect the KTS 200 to the PC/laptop until prompted to do so during the installation process.

To install the ESI[tronic] Startcenter, do the following:

1. Close all Windows programs, turn off the screen-saver, and disable any anti-virus software.
2. Insert the ESI[tronic] Startcenter DVD into the DVD drive of your PC/laptop.
3. If the DVD does not start automatically, in the task bar click **Start>>Run**.
4. Enter D:\setup.exe and confirm by clicking **OK**. **Please be patient, load times may vary.**



5. Select the installation language and confirm with **OK**.
6. Follow the on-screen instructions to install the ESI[tronic] Startcenter.
7. Installation times will vary – please be patient.



Caution!

Do not forget to enable your anti-virus software after installation and software security release code activation are complete.

Step 2: Connecting the KTS 200

To connect the KTS 200, do the following:

1. When instructed, plug in the KTS 200 power cable and then attach the USB cable from the KTS 200 to the PC/laptop.



Important Note

The first time you connect the KTS 200 to the PC/laptop, the USB driver installation in the **Windows operating system must not be carried out!** The ESI[tronic] Startcenter installation automatically installs the USB driver that enables the KTS 200 to communicate with the PC/laptop.

2. Restart the computer when the installation is complete.



Step 3: KTS 200 – Software Update



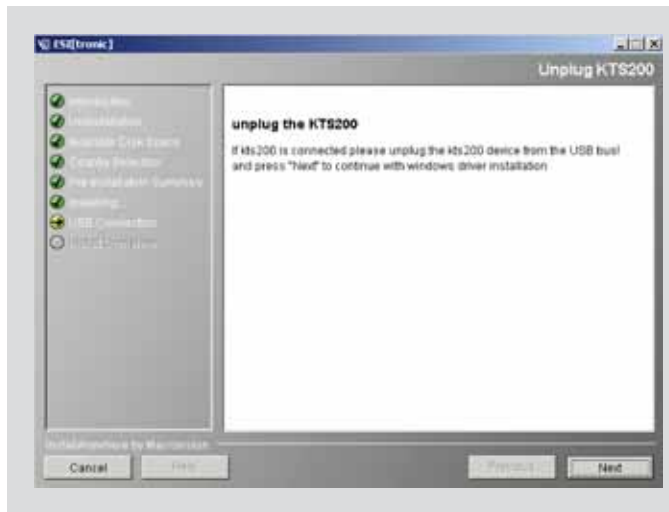
Note

Do not plug the KTS 200 into laptop/PC until prompted.

1. Insert DVD
2. If DVD does not start automatically, in the task bar click **Start >>Run**
3. Enter **D:\setup.exe** and confirm by clicking **OK**
4. Follow the on-screen instructions to load the ESI[tronic] Startcenter.



5. Installation times will vary – please be patient.



6. Confirm the KTS 200 is not connected to the laptop/ PC as instructed.

7. Connect the KTS 200 to power and when prompted connect to the laptop/PC via USB.

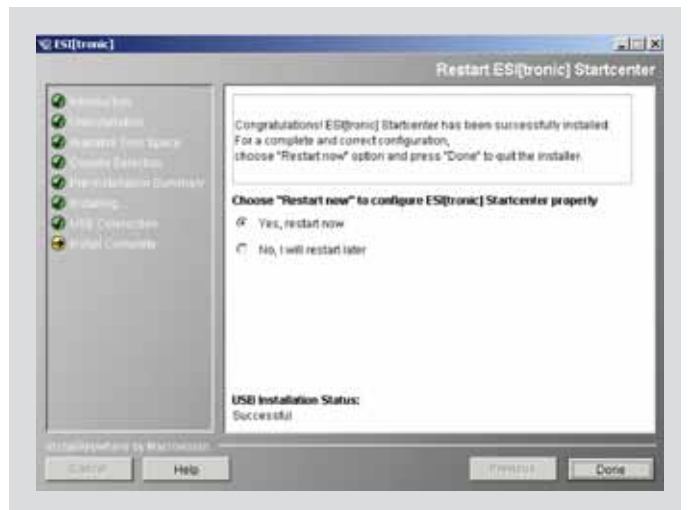


Important!

The USB driver installation in the Windows operating system must not be carried out..



8. When the Restart ESI[tronic] Startcenter window appears, click **Done** to restart the laptop/PC.



9. After the laptop/PC reboots, wait for the ESI[tronic] Startcenter to open.

10. At the KTS device view window, select **OK** to switch to the device view.



11. You will now see a similar screen (this is a sample screen below – your numbers will vary). Note that there is information in the box to the left of the Update button. This is the software update that was just loaded to your Startcenter.

12. Click **Update**:



13. The software update is now being transferred to the KTS 200. Please be patient as load times will vary. **Make sure you wait for the installation to be 100% complete before disconnecting the KTS 200.**



14. If re-licensing your KTS 200 is required please see Step 3: License the KTS 200 – Online Method in the KTS 200 Quick Start.

To find out if your KTS 200 needs to be re-licensed, supply power to the KTS 200. If the initial screen on the KTS 200 says a license code is necessary you will need to go through the license steps. If the initial screen does not and your unit is ready to use then a license code is already installed in the unit and you may proceed to diagnosis.

Step 4: License the KTS 200 – Online Method

1. Confirm the KTS 200 is connected to power.
2. Connect the KTS 200 to the PC/laptop with the USB connector.



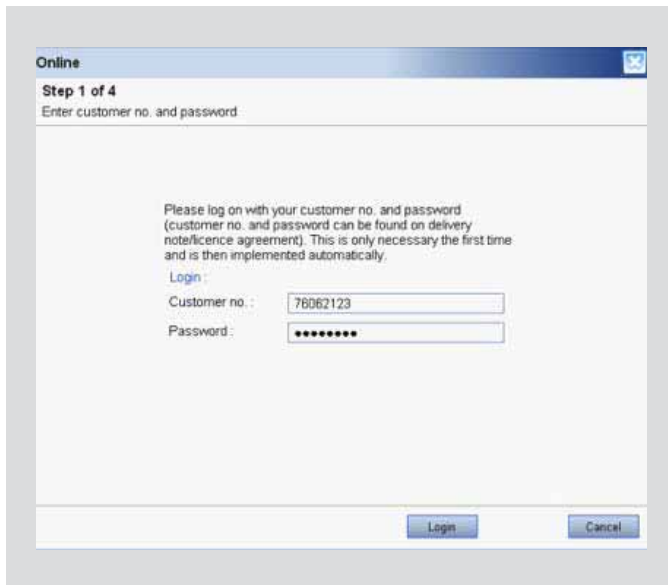
Note

To acquire the license code via Fax, follow the on-screen instructions or refer to the Installation Manual that came with the KTS 200.

- In Startcenter, select **Licensing>>Online**.



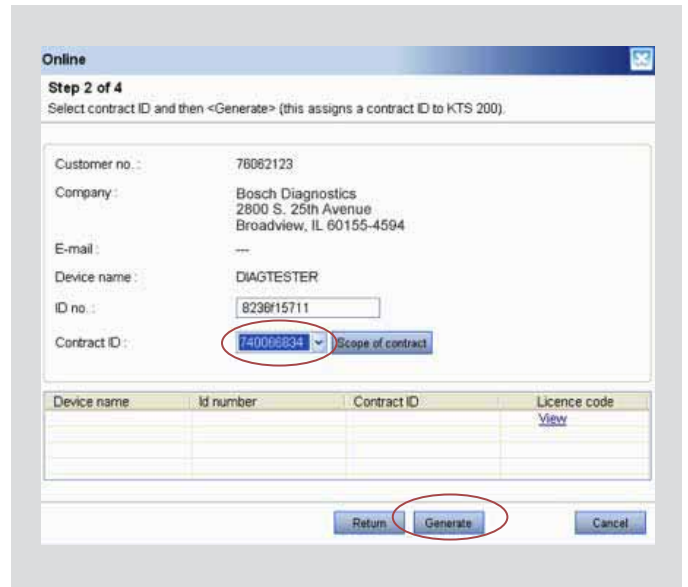
- Enter your customer number and password. This information can be found on the packing slip that accompanied your KTS 200.



Note

If you are unable to log into the Bosch Server, verify you are connected to the internet. If you are still unable to connect, you may need to change your proxy settings. Contact your network administrator for assistance.

- Click **Login**.



- Select the correct Contract ID from the drop down menu. The Contract ID is listed on the packing slip that came with the KTS 200. The Contract ID represents the software ordered.
- Click **Generate**.

8. Select **Execute** and the license code will be transferred to your KTS 200.

Online

Step 3 of 4

Select <Execute> (the licence code can be printed out with <Print>).

* Customer number: 78062123

ID no.: 8238f15711

Licence code:

7+X/	EzNs	cEbu	Ahlt
4FRN	e9M	H%8K	Aqb3
mBAX	mLP4	9Qs1	WYlp
vX4Y	pugm	S\$eR	Jw==8

Print Execute Cancel

9. Your KTS 200 is now licensed and ready to use!

Online

Step 4 of 4

Select <End>.

The following types of information are licensed for your KTS.

KTS 200 5D complete 5D European DVD

Print End

**Note**

For Technical Support assistance please call 800-321-4889 x2.

Robert Bosch LLC

Automotive Aftermarket Division
Diagnostics Business Unit
2040 Alameda Padre Serra, Ste 220
Santa Barbara, CA 93103
Phone 800-321-4889
©2008 Robert Bosch LLC
All rights reserved.