

# *SCT 815*

## *Uncrating & Assembly*

# Uncrating and Assembling the SCT 815

# Uncrating & Assembling SCT 815



Tools required to assemble SCT 815.

# Uncrating & Assembling SCT 815



1. Open box and remove all packing material and contents.
2. Dispose of packing materials and boxes properly.

# Uncrating & Assembling SCT 815



2. Open boxes and check received contents with packing list.

# Uncrating & Assembling SCT 815

3. Unpack Operating Instructions 1 689 989 362.



# Uncrating & Assembling SCT 815



4. Remove Operating Instructions and contents.

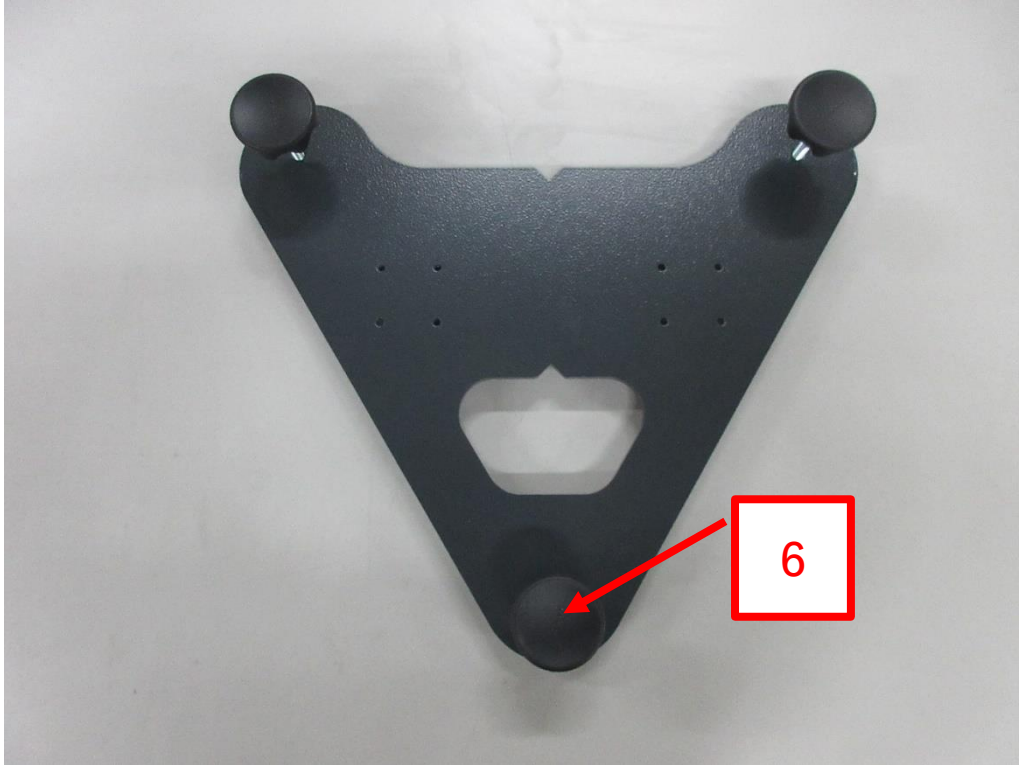
# Uncrating & Assembling SCT 815



5. Open box & remove Base Plate from 1 688 000 368.



# Uncrating & Assembling SCT 815



6. Place Base Plate on surface with leveling screw knobs pointing up.

# Uncrating & Assembling SCT 815



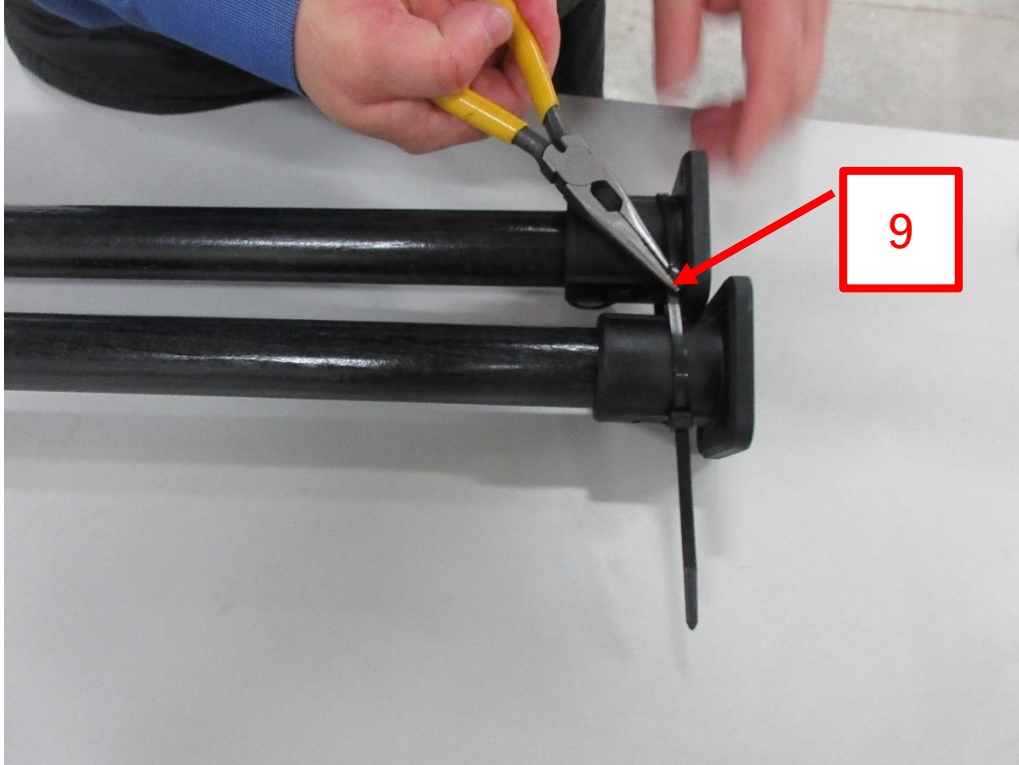
- 7. Locate hex screws, nuts & washers:  
Hex Screws, nuts & washers 1 687 010 613  
Plastic Screws 1 683 414 021

# Uncrating & Assembling SCT 815



8. Unpack & sort hex screws, nuts & washers.

# Uncrating & Assembling SCT 815



9. Cut tie wraps from Guide Tubes 1 680 700 313.

# Uncrating & Assembling SCT 815

10. Separate the 2 Guide Tubes.



# Uncrating & Assembling SCT 815



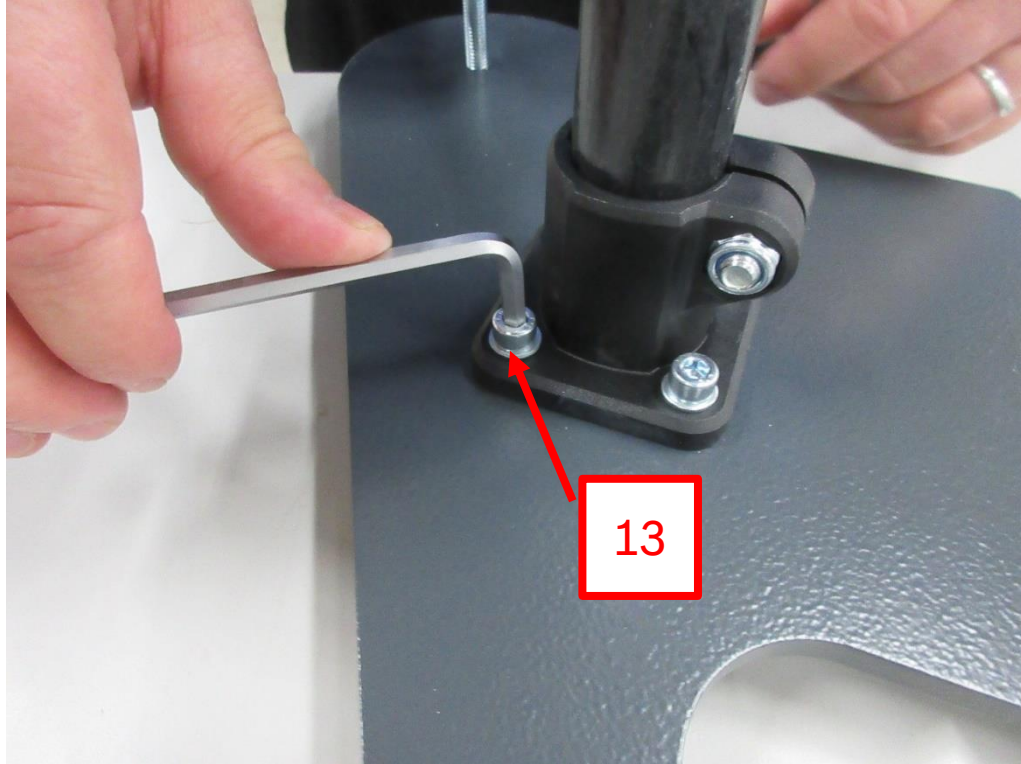
11. Place Guide Tube on to Base Plate, locate Hex Screws & Washers.

# Uncrating & Assembling SCT 815



12. Place washers over hex cap screw.

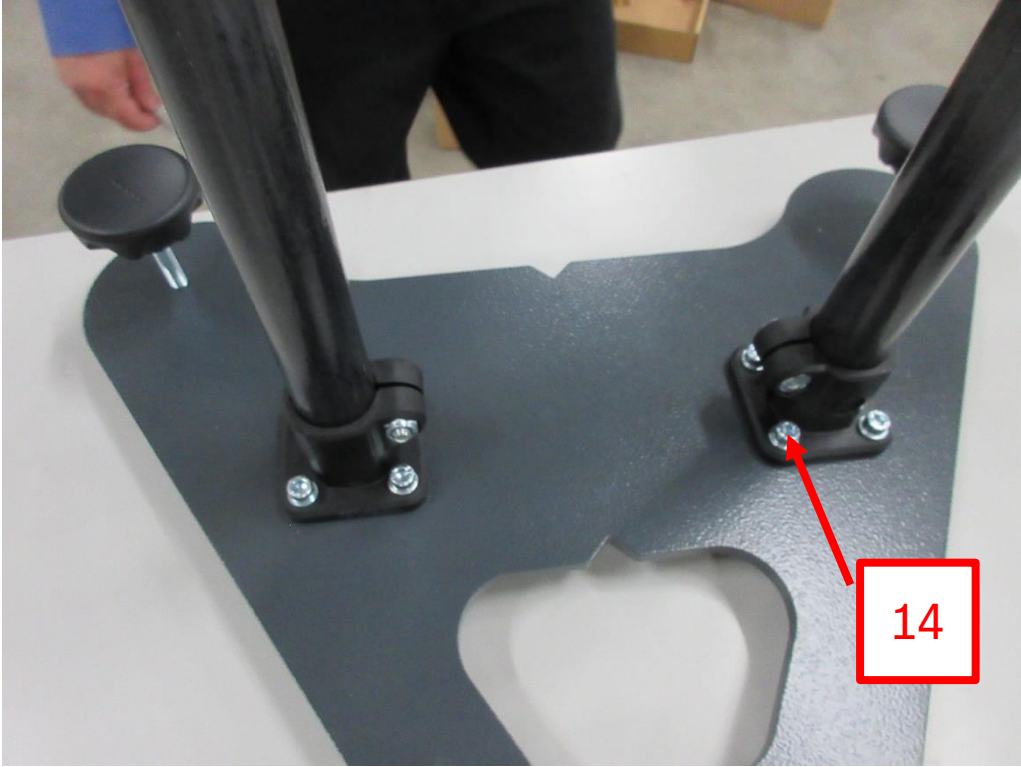
# Uncrating & Assembling SCT 815



13. Install hex cap screws & tighten to 6nm.



# Uncrating & Assembling SCT 815



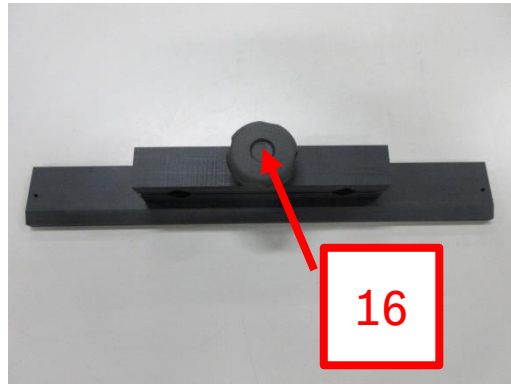
14. Repeat the process of installing the second Guide Tube on the Base Plate.

# Uncrating & Assembling SCT 815



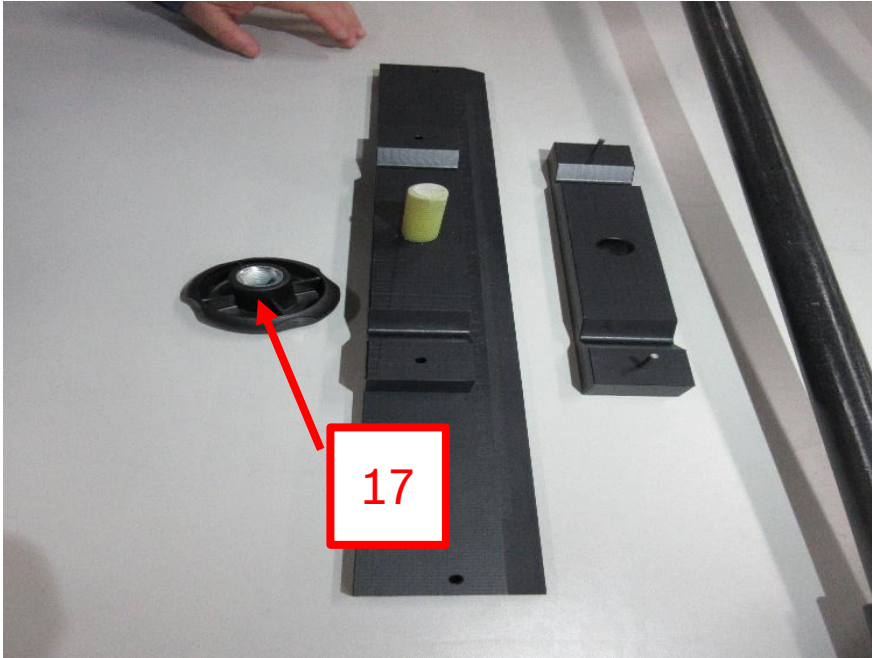
15. Unpack Tool Holder 1 688 040 319.

16. Tool Holder 1 688 040 319.

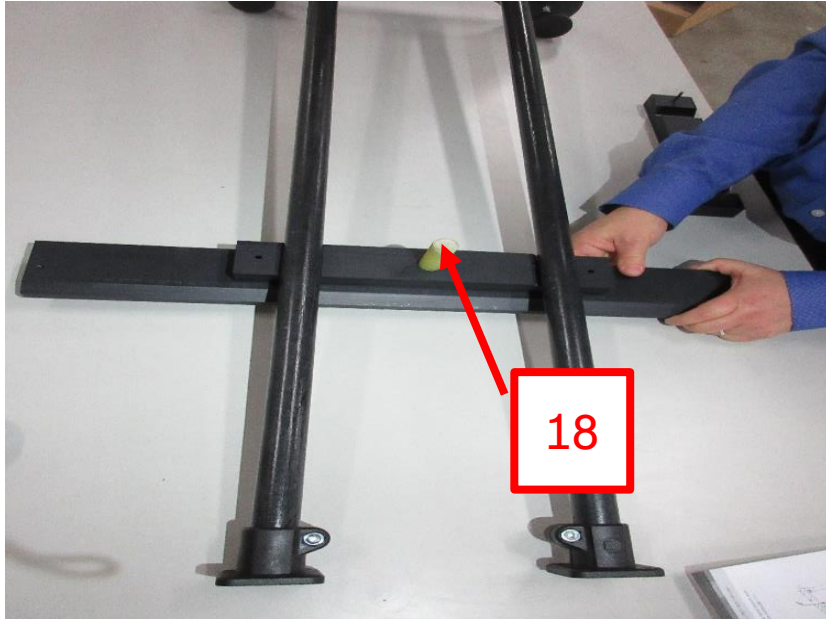


# Uncrating & Assembling SCT 815

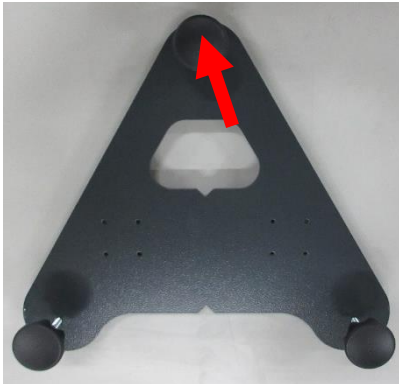
17. Remove Knurled Screw & separate Tool Holder halves.



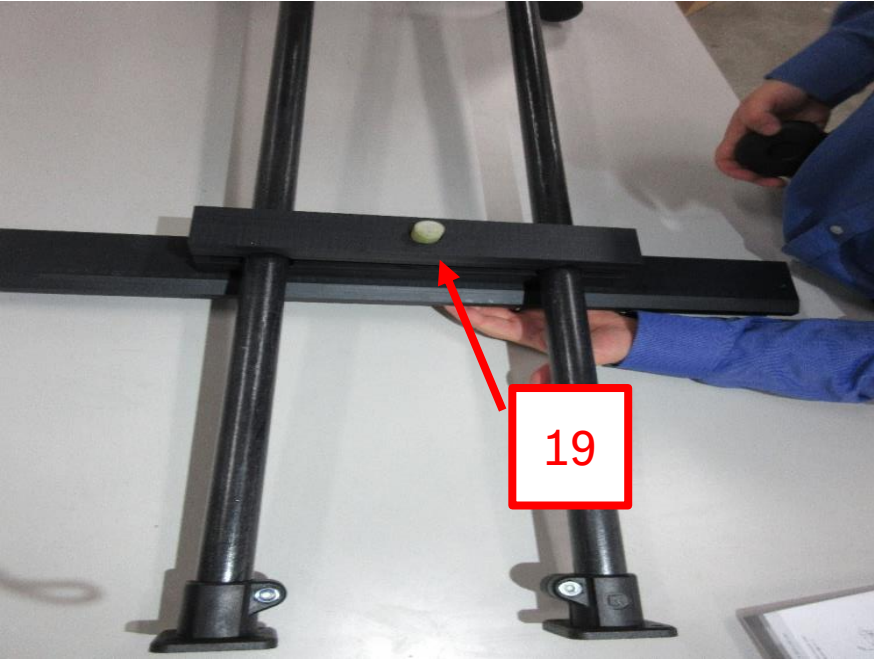
# Uncrating & Assembling SCT 815



18. Install Tool Holder bottom half on back side of Guide Tubes; the threaded plastic bolt of the Tool Holder points up to the Base Plate triangle.



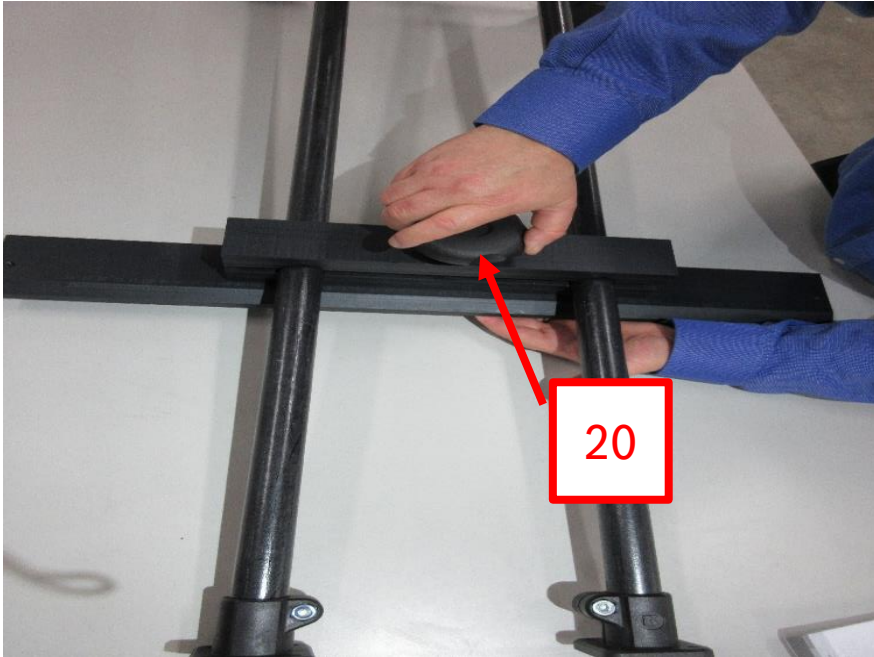
# Uncrating & Assembling SCT 815



19. Install Tool Holder top half onto bottom half.

# Uncrating & Assembling SCT 815

20. Install Knurled Screw and tighten.

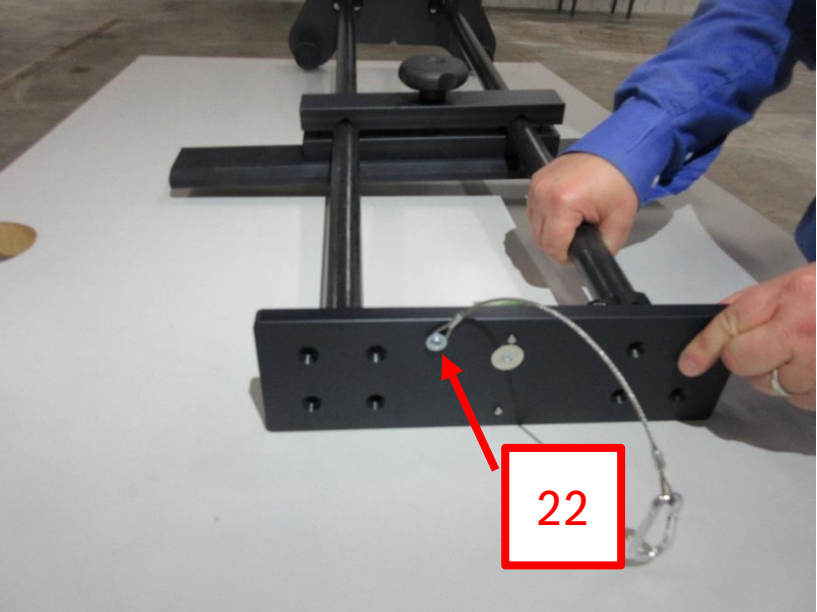


# Uncrating & Assembling SCT 815

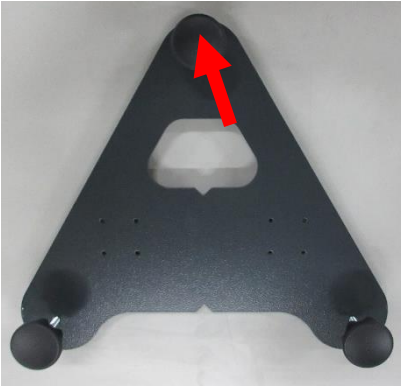


21. Unpack Line Laser Mount 1 681 038 414.

# Uncrating & Assembling SCT 815

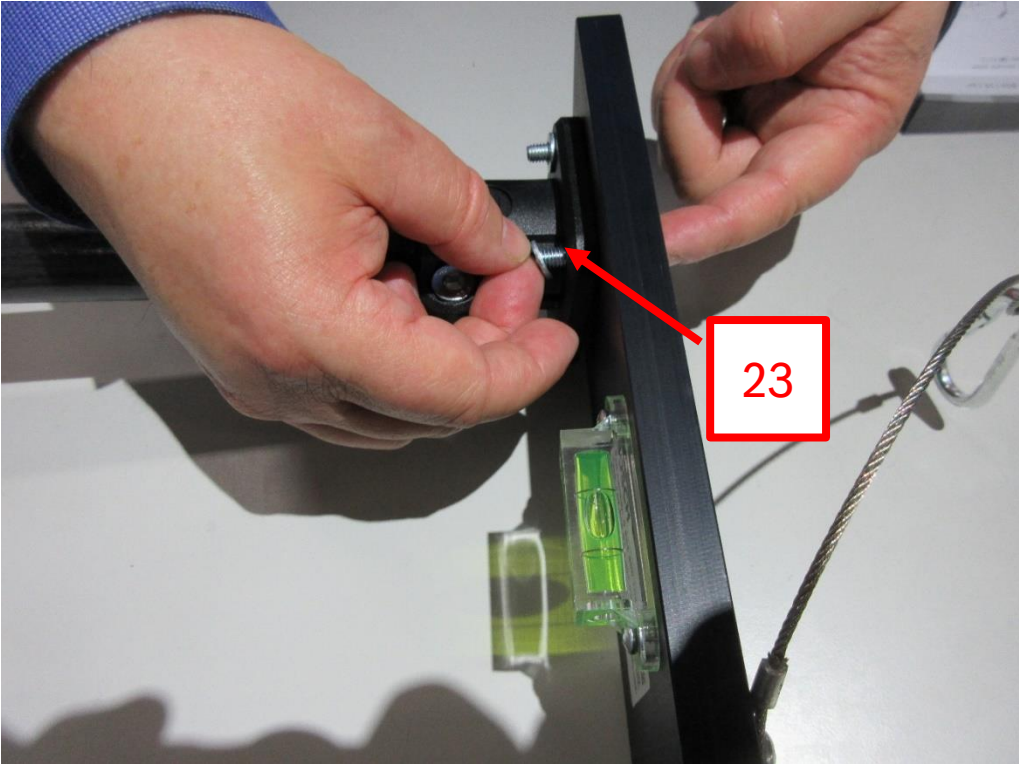


22. Attach Line Laser Mount to Guide Tubes, Arrestor Cable & Spirit Level, these should point toward the Base Plate triangle.



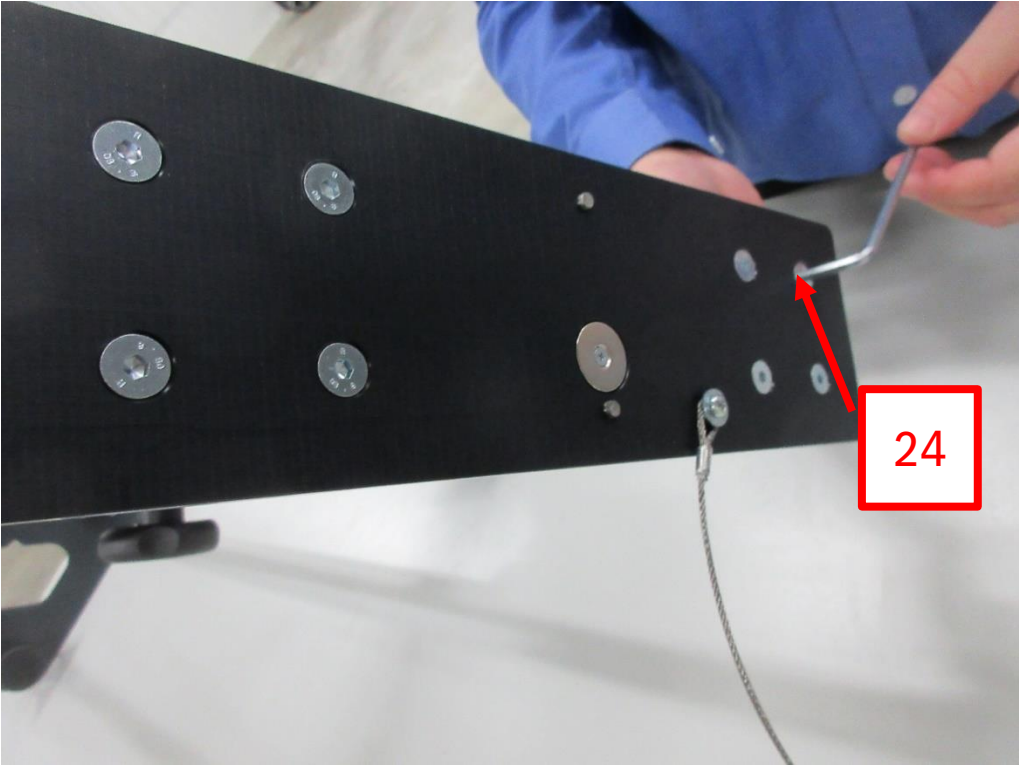


# Uncrating & Assembling SCT 815



23. Install the counter sunk bolts through Line Laser Mount & Guide Tube, install washers & hex nuts.

# Uncrating & Assembling SCT 815



24. Tighten counter sunk bolt hex nuts to 6nm.

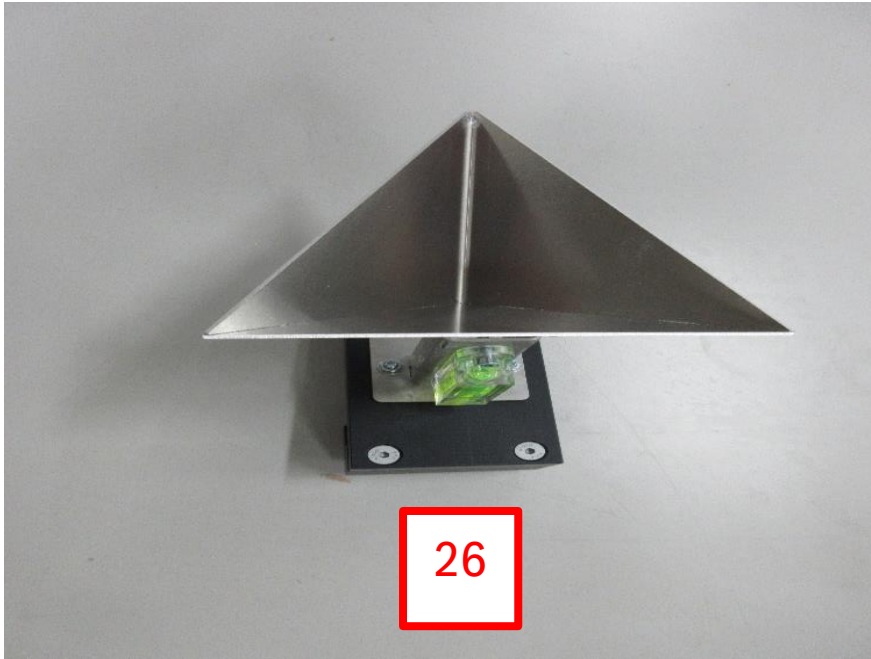
# Uncrating & Assembling SCT 815



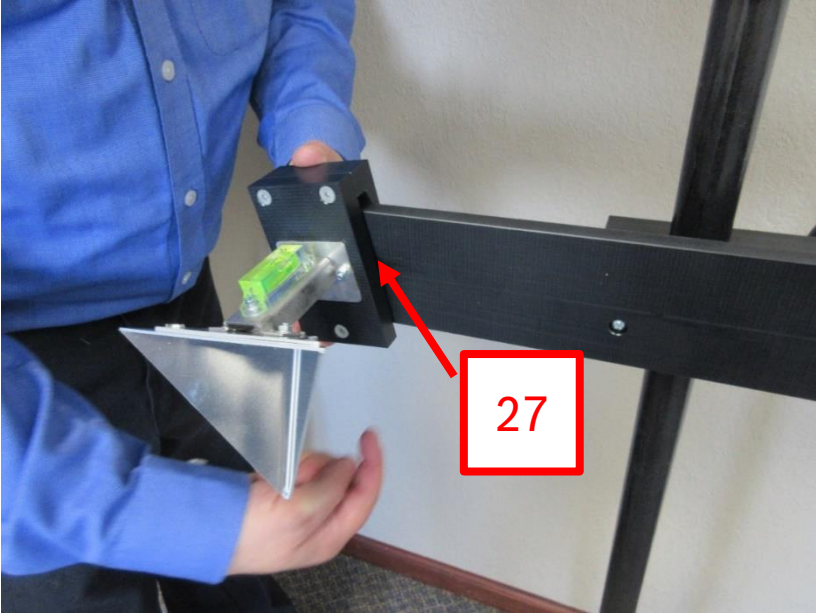
25. Unpack Prismatic Reflector 1 685 350 017.

# Uncrating & Assembling SCT 815

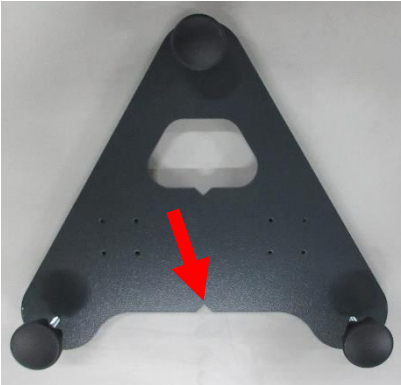
26. Prismatic Reflector 1 685 350 017.



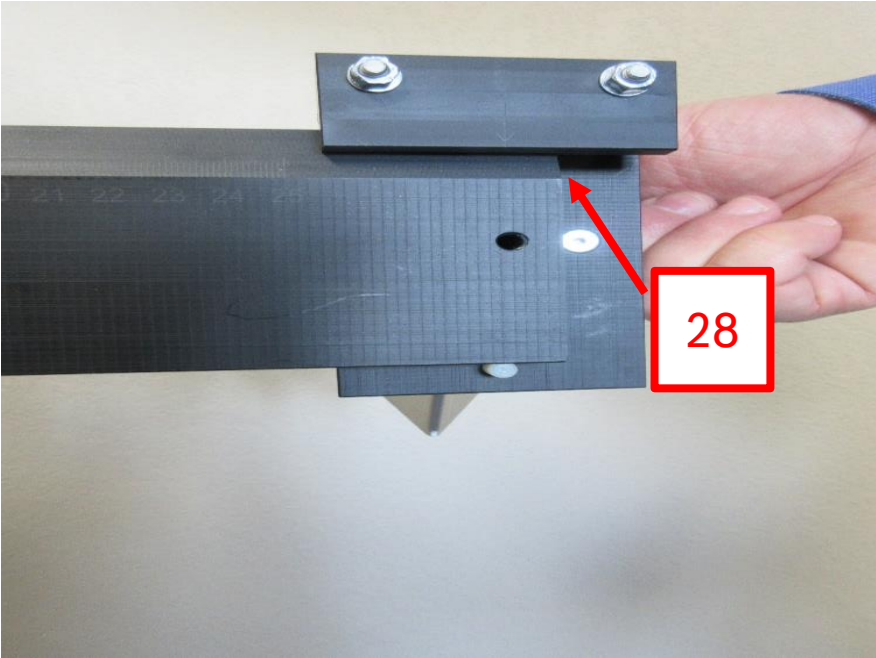
# Uncrating & Assembling SCT 815



27. Slide Prismatic Reflector onto the Tool Holder with the Prismatic Reflector points away from the Base Plate triangle.

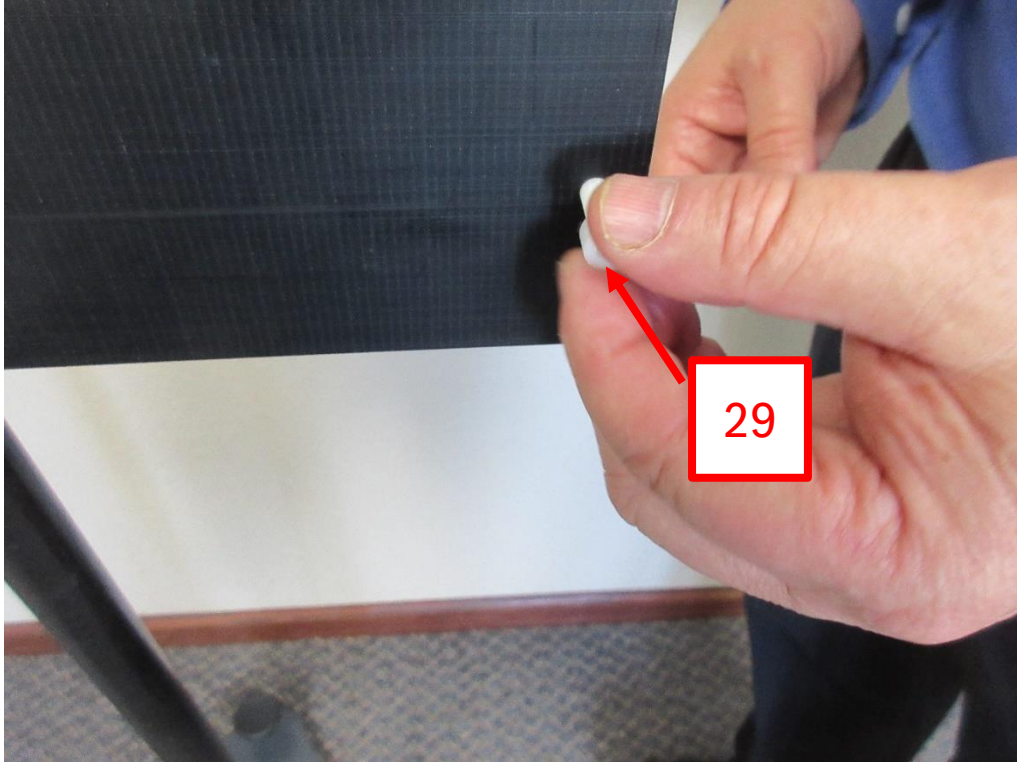


# Uncrating & Assembling SCT 815



28. Slide Prismatic Reflector onto the Tool Holder.

# Uncrating & Assembling SCT 815



29. Install plastic screws in the Tool Holder at each end to prevent Prismatic Reflector from sliding off.

Caution: Tilting the SCT 815 on its side will cause the Prismatic Reflector to slide, breaking off the plastic screws, and allow the Prismatic Reflector to slide off the Tool Holder onto the floor; potentially and damaging the Prismatic Reflector.

# Uncrating & Assembling SCT 815



30. Unpack Laser Range Finder Mount  
1 680 423 011.



# Uncrating & Assembling SCT 815



31. Laser Range Finder Mount 1 680 423 011.

# Uncrating & Assembling SCT 815



32. Install Laser Range Finder Mount over the top of the Prismatic Reflector.

# Uncrating & Assembling SCT 815



33. The slot of the Laser Range Finder Mount rest on top of the Prismatic Reflector.

# Uncrating & Assembling SCT 815



34. Place the Laser Range Finder into the Laser Range Finder Mount.

# Uncrating & Assembling SCT 815



35. Install the Line Laser on the Line Laser Mount & install the Arrestor Cable to secure the Line Laser.

Caution: Failure to attach Arrestor Cable may cause damage to Line Laser if dropped.

***THANK YOU***